



CLIMATE IN JUSTICE



**THE
GLOBAL
ARC**





YOUNG ENVIRONMENTAL JUSTICE ADVOCATES

ENVIRONMENTAL
RACISM
AFFECTS OUR
COMMUNITIES

Especially **low-income**
racial and ethnic
minorities

Environmental racism in the U.S. is based on a **long history** of **racial** and **ethnic segregation** that exposed underprivileged communities to environmental hazards

We'll explore how racist and anti-immigrant policies from the past have:

- federalized segregation
 - minimized underprivileged individuals' access to wealth
- benefitted private enterprises
- created the legacy of environmental racism in present-day America

Through a visit of San Diego's neighborhoods and their history



CLIMATE
IN
JUSTICE



Redlining

Is the refusal of a loan, insurance, or a restriction of services to individuals deemed to reside in a low-value area, often due to the racial characteristics of the neighborhood. The term comes from the Home Owner's Loan Corporation residential security maps created in the 1930s, however, segregation existed in racist neighborhood covenants before the 1930s....

These discriminatory appraisal methods were federalized by multiple government agencies, for example, the Federal Housing Administration appraised areas and provided loans to mainly white suburban neighborhoods

Eminent Domain

Poletown Neighborhood Council v. Detroit gives precedence (allows) for public use to also include private industries' benefit in the understanding that infrastructure would improve the economy of a community.

condemned lands are often the living areas of low-income communities



HISTORY OF ENVIRONMENTAL RACISM

Industrialization

The increasing need for goods and American spending culture created labor and infrastructure demands that oftentimes took advantage of lower-income communities.

Ex: Transportation systems focus on the creation of highways and dismantling of public transport

Suburbanization

- The suburbs were mostly for white middle and upperclass Americans due to restrictive and discriminatory housing deeds.
- The single family zoning in the suburbs reshaped the American landscape and increased car dependency.
- This left low-income communities and minorities in urban or industrial environments, which contain exponentially higher levels of air pollution.

Case Study #1

Barrio Logan

- Mixed-use zoning port community
- #1 in the county for pollution burden
- Near the top in the county for diesel pollution
- Top 10 statewide for high rents and low wages
- Rate of asthma-related hospital visits is higher than 92.9% of census tracts throughout the state
- 78% of Barrio Logan's population are considered low-income and 98% are minorities

different zoning has been outlined



P O L L U T I O N



INTRODUCTION:

POLLUTION, SPECIFICALLY AIR POLLUTION, IS A DRIVING FORCE BEHIND CLIMATE CHANGE AND THE DESTRUCTION OF OUR ENVIRONMENT AND HUMAN HEALTH.

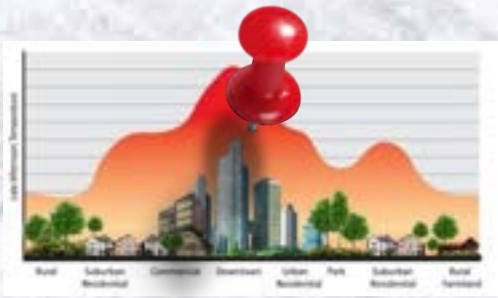
CAUSES:

CARS, WILDFIRES, CITIES, AND MAJOR INDUSTRIAL CORPORATIONS. CHEMICAL EMISSIONS LIKE CARBON DIOXIDE AND CARBON MONOXIDE ARE RELEASED INTO THE AIR BY INDUSTRIAL FACTORIES AND OIL REFINERIES

ON AVERAGE, SAN DIEGO EXPERIENCES 43.3 DAYS OF UNHEALTHY OZONE ANNUALLY, FAR EXCEEDING THE 3.2-DAY FEDERAL TARGET. ITS SEVERE NONATTAINMENT STATUS HAS RESULTED IN AN "F" RATING FROM THE AMERICAN LUNG ASSOCIATION. SINCE 2015, THE NUMBER OF UNHEALTHY OZONE DAYS HAS RISEN BY 42 PERCENT.

"W.H.O. DATA SHOW THAT ALMOST ALL OF THE GLOBAL POPULATION (99%) BREATHE AIR THAT EXCEEDS W.H.O. GUIDELINE LIMITS AND CONTAINS HIGH LEVELS OF POLLUTANTS, WITH LOW- AND MIDDLE-INCOME COUNTRIES SUFFERING FROM THE HIGHEST EXPOSURES."

- WORLD HEALTH ORGANIZATION



URBAN HEAT



WHAT IS IT?

URBAN HEAT IS WHEN A CITY HAVE A HIGHER TEMP THEN OUTLYING AREAS. SOME CAUSES FOR URBAN HEAT ARE LOW ALBEDO MATERIALS, PAVED SURFACES SINCE THEY ABSORB MORE HEAT, AND LACK OF VEGETATION LIKE TREES

EFFECT:

URBAN HEAT DISPROPORTIONATELY EFFECTS LOW INCOME PEOPLE OF COLOR BECAUSE OF LACK OF RESOURCES AND CITY PLANNING

MOST OF PLACES THAT HAVE AN INCREASE IN HEAT ARE LOCATED IN "UNDESIRABLE" AREAS SUCH AS HIGHWAYS AND INDUSTRIAL AREAS

THE INCREASE IN URBAN HEAT IN THESE COMMUNITIES LEADS TO THE RISE OF HEAT RELATED ILLNESS SUCH HYPERTHERMIA AND HEAT STROKE

70% OF THE AREAS THAT LOW INCOME AND PEOPLE OF COLOR OCCUPY EXPERIANCE A SIGIFICANT INCREASE IN URBAAN HEAT COMPARED TO AREAS WITH RICHER WHITE PEOPLE

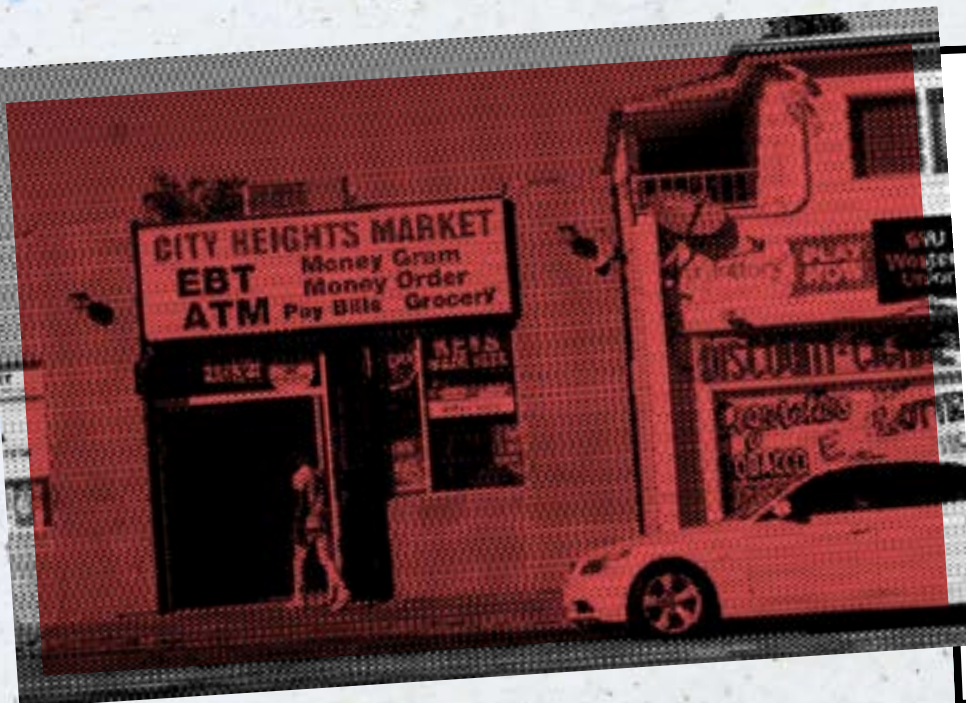
We walked around Kensington and City Heights, analyzing why one area was different from the other in order to get a real-world understanding of environmental racism. After the trip, we interviewed students at our individual schools about their opinions on environmental racism and whether they felt affected by it or not.

KENSINGTON AND CITY HEIGHTS



COMPARING SPACES

These areas have two different diverse sets of backgrounds, culture, population, and sets of income. This leads to very different looking spaces. We photographed some examples of this in the following pages.





alleyways with greenery



example of its alleyways

Kensington



wide streets that increase walkability →

City Heights



narrower streets →



locally owned business in city heights



park next to a library
and many small restaurants



single-family homes

Kensington



City Heights



restaurants and stores



narrower and busier roads

Contrasting

- MORE NATURE (TREES, BUSHES, PLANTS).
- BUFFER ZONE BETWEEN THE SIDEWALK AND STREET.
- LACKS IN DIVERSITY WITH A 78.4% MAJORITY OF WHITE PEOPLE IN KENSINGTON.
- AREA CONSTRUCTION ARE MORE WELL-THOUGHT, DEVELOPED, AND CARED FOR.
- COOL TEMPERATURE WITH PLENTY OF SHADE

KENSINGTON

- STREETS ARE NOT THAT WELL DEVELOPED.
- TRASH IS NOT TAKEN CARE OF
- HIGH WALKABILITY RATE; STORES, LIBRARIES, PARKS, AND HOMES ARE CLOSE TO ONE ANOTHER.
- A MORE DIVERSE AREA WITH LOW INCOME FAMILIES.
- HIGH TEMPERATURES WITH LITTLE SHADE
- MORE INDUSTRIALIZED, DIRTY, CRACKS IN SIDEWALKS

CITY HEIGHTS

INTERVIEW HIGHLIGHTS

“Climate change is really forcing us to really understand and talk about it (environmental racism), and hopefully redress the inequities”

-Anchi Mei
North Park

“Our communities should balance out where we spend our money and help others in need who don't have resources”

-Minh
Huynh
La Mesa

WATCh



Here



YOUTH PERSPECTIVE

Living in a low-income community is rough due to lack of trees and the constant temperature rising
- Hieu Le

Multiple of my family members have had heat stroke due to lack cooling resources
-Nicholas Campbell

I have to spend tons of money on gas just for transportation to school

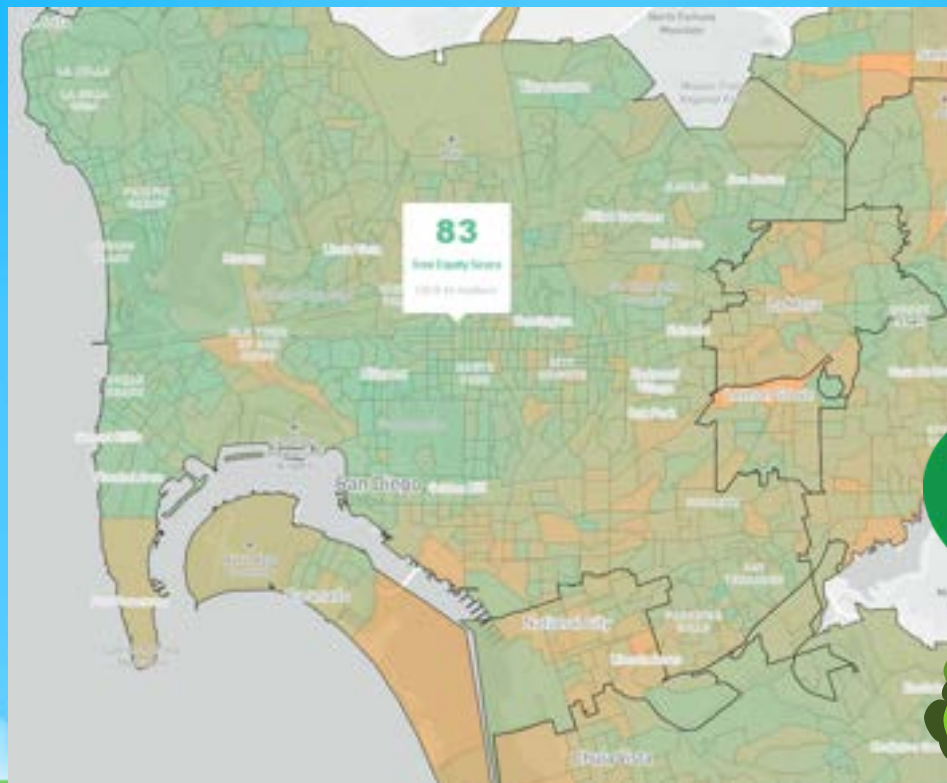
-Anthony Nguyen

*ENVIRONMENTAL
RACISM IS BAD
- AIDEN HARVEY*

Air pollution makes it harder for asthmatic people in my family to breathe. Everyone should be able to freely breathe air without negative health consequences caused by industrial pollution.
- Hari Krishnamurthy



[HTTPS://WWW.TIKTOK.COM/@VOXDOTCOM/VIDEO/7171095379235360046?
_R=1&_T=8XKUMJWUP4C&IS_FROM_WEBAPP
P=V1&ITEM_ID=7171095379235360046](https://www.tiktok.com/@VOXDOTCOM/VIDEO/7171095379235360046?_R=1&_T=8XKUMJWUP4C&IS_FROM_WEBAPP=V1&ITEM_ID=7171095379235360046)



TREE EQUITY SCORE

[HTTPS://TREEEQ
UITYSCORE.ORG/](https://treeequityscore.org/)





EFFECTS

One of the main contributors to climate change would be deforestation. Trees are like chests that store carbon dioxide. With lesser trees, and forests, they release carbon dioxide and other greenhouse gases. Forest loss and damage is the cause of around 10% of global warming. There's simply no way we can fight the climate crisis if we don't stop deforestation.

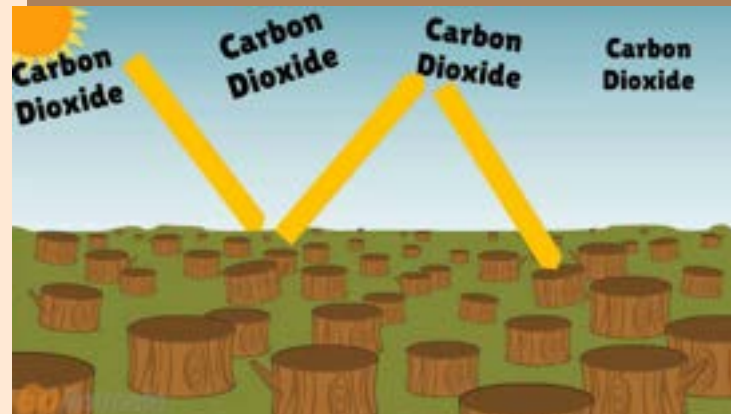
WHAT CAN WE DO?

Preventing deforestation is as easy as:

- Planting a tree
- Recycle cardboard & paper
- Use less paper
- Recycle and reuse products
- Spreading awareness

DEFORESTATION

Deforestation is the process of cutting down trees and forests for urban use,



AUTHORS

Presented by:

Sofia Sanchez

Hari Krishnamurthy

Nicholas Campbell

Hieu Le

Anthony Nguyen

Aiden Harvey

Evelin Valadez

Raphael Lagoc

Anthony Nguyen

Acknowledgements

The Young Environmental Justice Advocates Academy would like to thank the California Endowment for their support.

